



CLOSED

WILD CHERRY
GXT-6104-7054
SHOWN

7"
178mm



OPEN

31 5/8"
803mm

32"
813mm

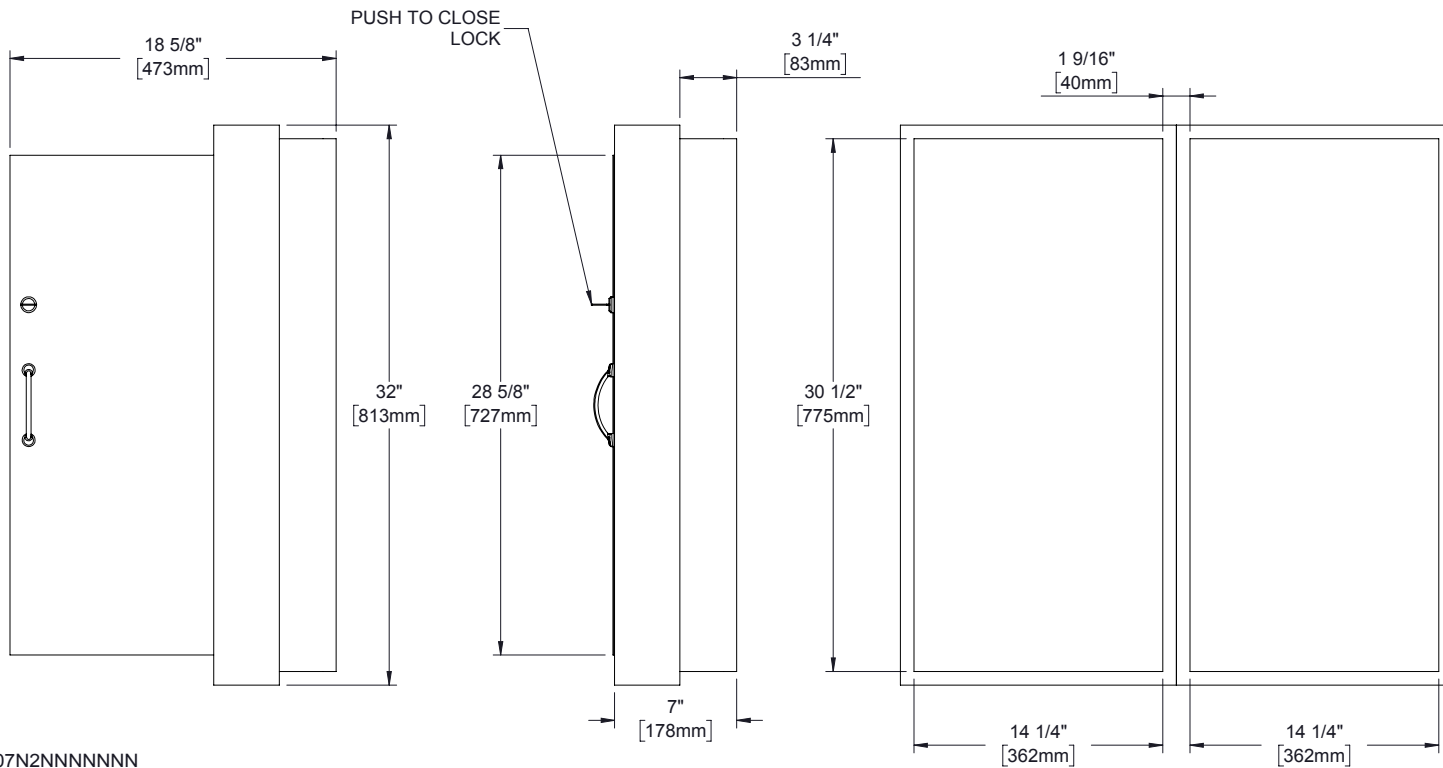
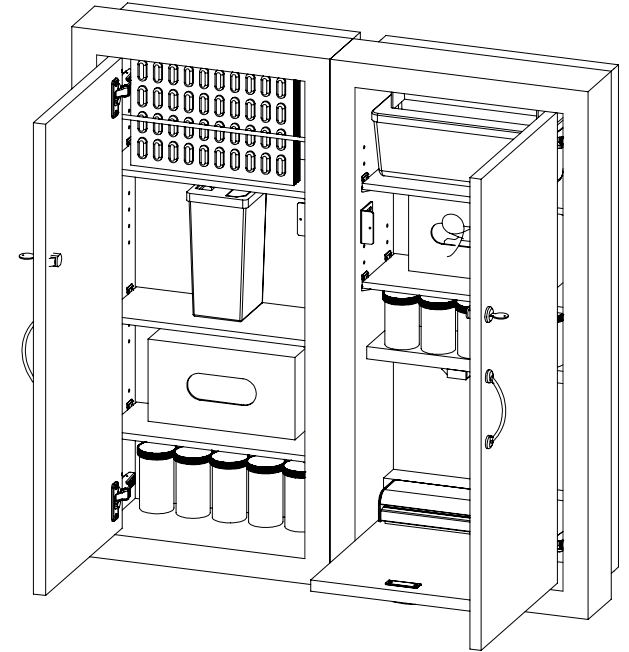
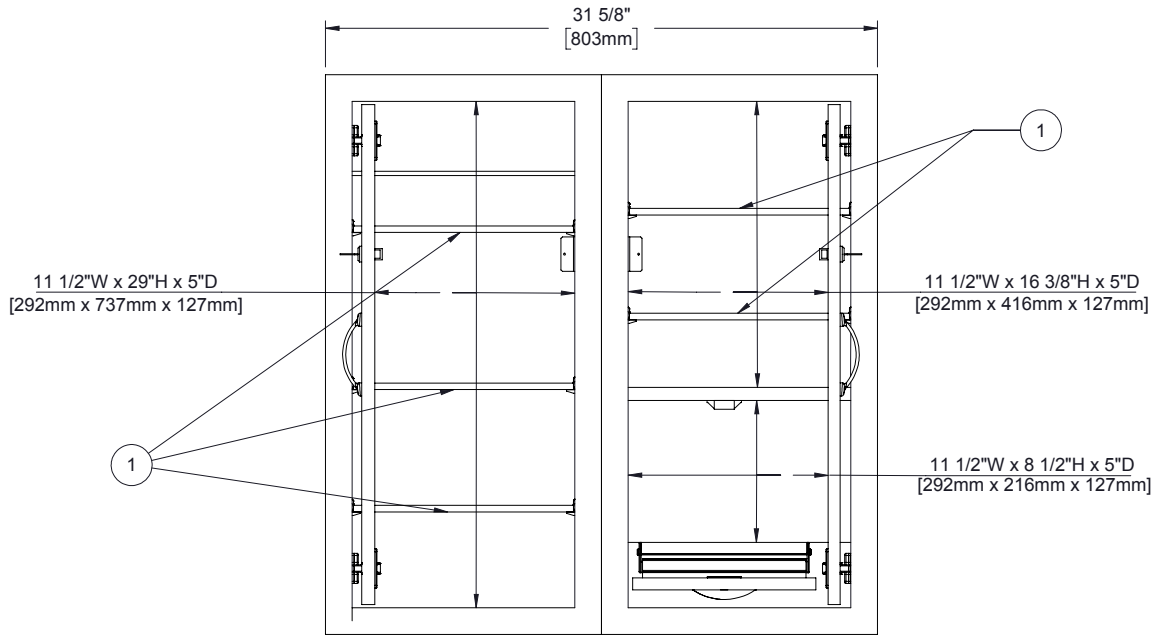
18 5/8"
473mm

STANDARD PART NUMBERS AND AVAILABLE COLORS**

FROSTY WHITE GXT-6104-1573	FUSION MAPLE GXT-6104-7909	BANNISTER OAK GXT-6104-7806	FONTHILL PEAR GXT-6104-10745	WILD CHERRY GXT-6104-7054	BRIGHTON WALNUT GXT-6104-7922	OTHER COLORS CALL PROXIMITY GXT-6104-9999

GXD323207N2NNNNNNN

	SPECIFICATIONS		<small>ALL DIMENSIONS ARE IN INCHES UNLESS NOTED OTHERWISE. DESIGN SUBJECT TO CHANGE WITH EQUIPMENT SPECIFICATIONS. ALL INFORMATION ON THIS DRAWING IS PROPRIETARY AND MAY NOT BE USED WITHOUT PERMISSION FROM PROXIMITY SYSTEMS, INC. © 2016.</small>	OPTIONAL ACCESSORIES/PART NO. (NOT INCLUDED)	
	<small>*ASSUMES VESA HOLE PATTERN IS CENTERED ON MONITOR</small>			1. N/A	
	EQUIPMENT	MAX SIZE DIMENSIONS		2. N/A	
	CPU	N/A		3. N/A	
*MONITOR	N/A	R: A			
KEYBOARD/MOUSE AREA	N/A	SPECIFICATION DOCUMENT V2.0 10/04/2016			
WWW.PROXIMITYSYSTEMS.COM	TEL: 800-437-8111	SHEET 1 OF 2			



COMPONENTS INCLUDED

ITEM NO.	COMPONENTS
1	5 ADJUSTABLE SHELVES
2	N/A
3	N/A
4	N/A
5	N/A

GXT323207N2NNNNNNN



ALL DIMENSIONS ARE IN INCHES UNLESS NOTED OTHERWISE. DESIGN SUBJECT TO CHANGE WITH EQUIPMENT SPECIFICATIONS. ALL INFORMATION ON THIS DRAWING IS PROPRIETARY AND MAY NOT BE USED WITHOUT PERMISSION FROM PROXIMITY SYSTEMS, INC. © 2018.