



CLOSED

WILD CHERRY
CXT-6038-7054
SHOWN



OPEN

STANDARD PART NUMBERS AND AVAILABLE COLORS** #60 FINISH STANDARD

| FROSTY WHITE | FUSION MAPLE | PORTICO TEAK | RUSSET ALONA | WILD CHERRY | BRIGHTON WALNUT | OTHER COLORS CALL PROXIMITY |
|-----------------|-----------------|-----------------|-----------------|----------------|--------------------|--------------------------------|
| CXT-6038-1573 | CXT-6038-7909 | CXT-6038-8210 | CXT-6038-Y0291 | CXT-6038-7054 | CXT-6038-7922 | CXT-6038-9999 |
| | | | | | | |

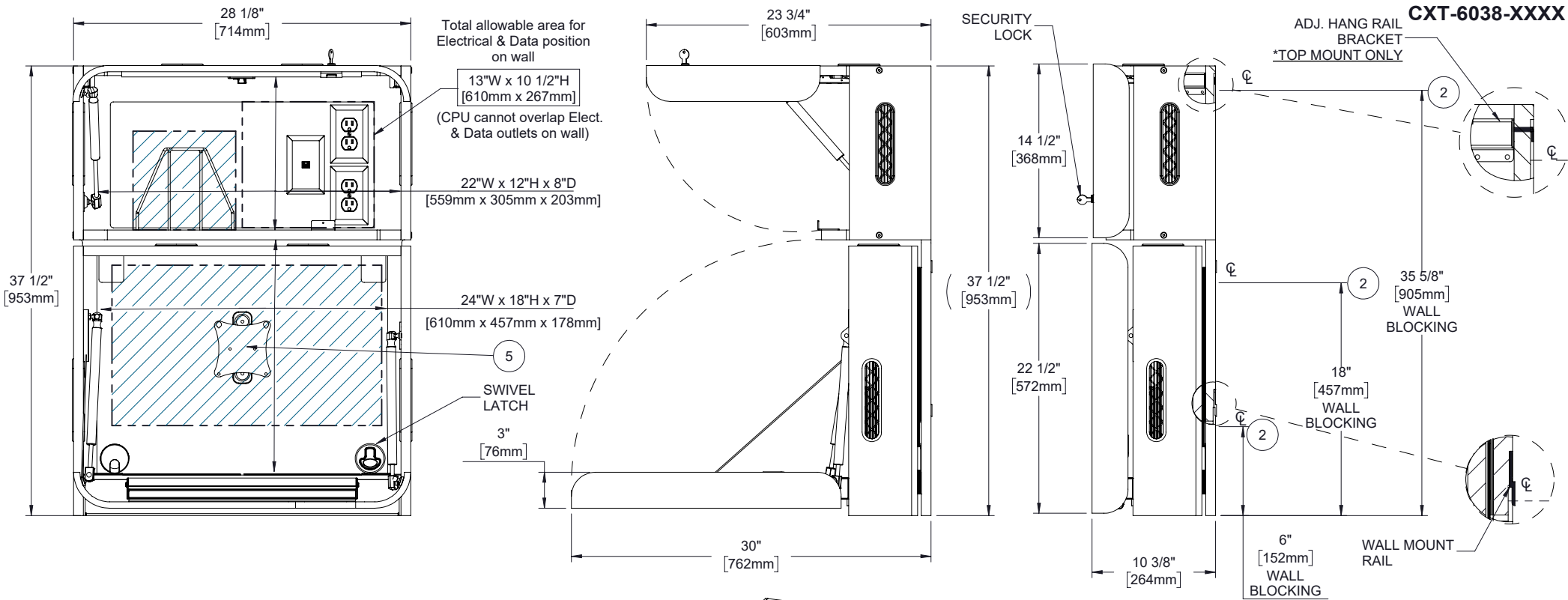
OPTIONAL ACCESSORIES/PART NO. (NOT INCLUDED)

| | |
|----|---|
| 1. | SLOPED CABINET TOP: AC-CTOP-10-XXXX |
| 2. | COVER FOR RECESSED STORAGE: AC-CNTR-CVR |
| 3. | LED LIGHT: AC-LED-LGHT |
| 4. | MONITOR ARM: AC-ARM |
| 5. | UVC SURFACE MOUNT: UVC-SM-NA |

CXT283810T2NNLNNND

| SPECIFICATIONS | |
|---|---------------------|
| *ASSUMES VESA HOLE PATTERN IS CENTERED ON MONITOR | |
| EQUIPMENT | MAX SIZE DIMENSIONS |
| CPU | 15"W x 12"H x 8"D |
| *MONITOR | 24"W x 13"H x 3"D |
| KEYBOARD/MOUSE AREA | 22"W x 20"D |

ALL DIMENSIONS ARE IN INCHES
UNLESS NOTED OTHERWISE.
DESIGN SUBJECT TO CHANGE
WITH EQUIPMENT SPECIFICATIONS.
ALL INFORMATION ON THIS
DRAWING IS PROPRIETARY AND
MAY NOT BE USED WITHOUT
PERMISSION FROM PROXIMITY
SYSTEMS, INC. © 2020.



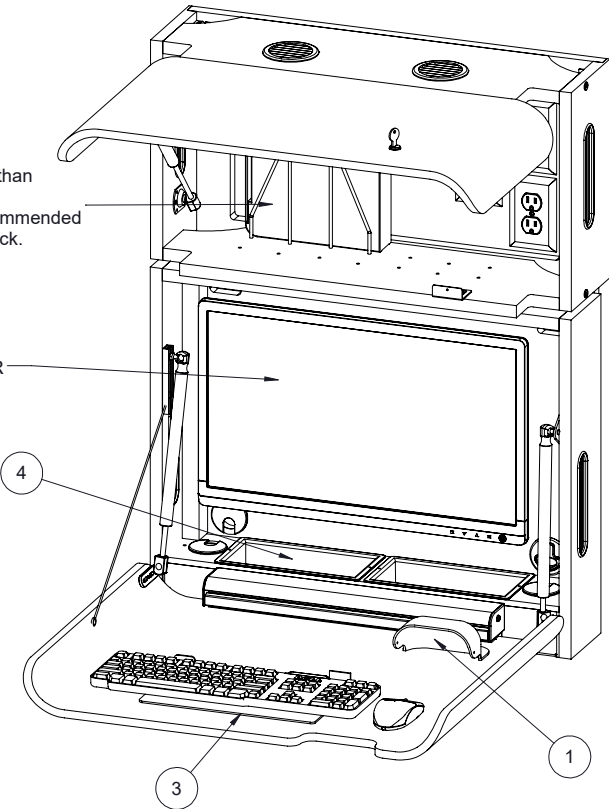
CXT283810T2NNLNNND



ALL DIMENSIONS ARE IN INCHES
UNLESS NOTED OTHERWISE.
DESIGN SUBJECT TO CHANGE
WITH EQUIPMENT SPECIFICATIONS.
ALL INFORMATION ON THIS
DRAWING IS PROPRIETARY AND
MAY NOT BE USED WITHOUT
PERMISSION FROM PROXIMITY
SYSTEMS, INC. © 2020.

CPU's larger than
10x10x2
Top accessory recommended
for power brick.

MONITOR



| COMPONENTS INCLUDED | |
|---------------------|------------------------|
| ITEM NO. | COMPONENTS |
| 1 | MOUSE CATCHER |
| 2 | WALL MOUNT RAIL SYSTEM |
| 3 | KEYBOARD TRAY |
| 4 | RECESSED STORAGE |
| 5 | MONITOR TILT MOUNT |
| R: A | SHEET 2 OF 2 |