



WILD CHERRY
CXT-6036-7054
SHOWN

CLOSED

STANDARD PART NUMBERS AND AVAILABLE COLORS**

#60 FINISH STANDARD

FROSTY WHITE CXT-6036-1573	FUSION MAPLE CXT-6036-7909	PORTICO TEAK CXT-6036-8210	RUSSET ALONA CXT-6036-Y0291	WILD CHERRY CXT-6036-7054	BRIGHTON WALNUT CXT-6036-7922	OTHER COLORS CALL PROXIMITY CXT-6036-9999

CXT283807B2NNRNNND

PROXIMITY®

SPECIFICATIONS

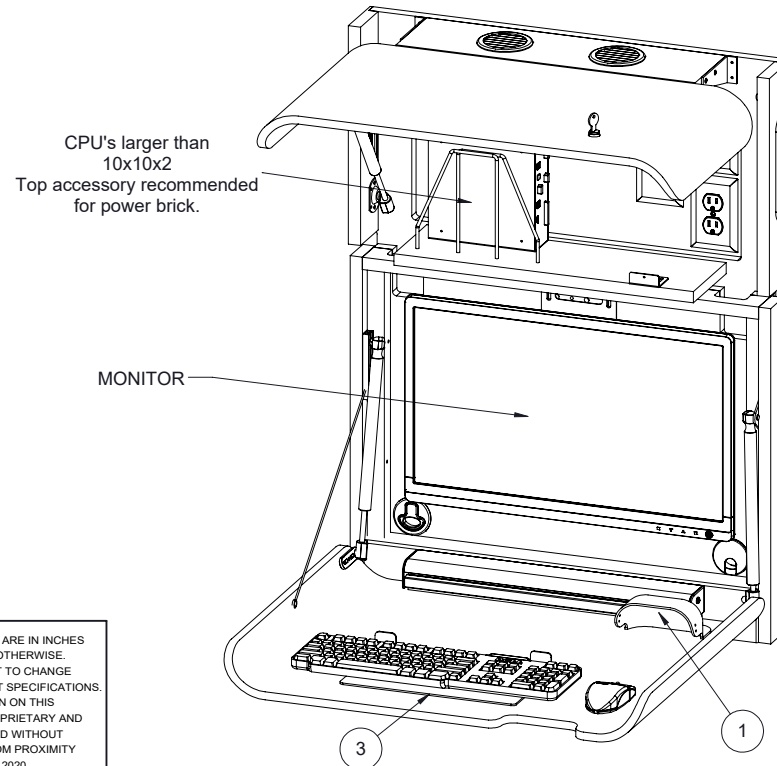
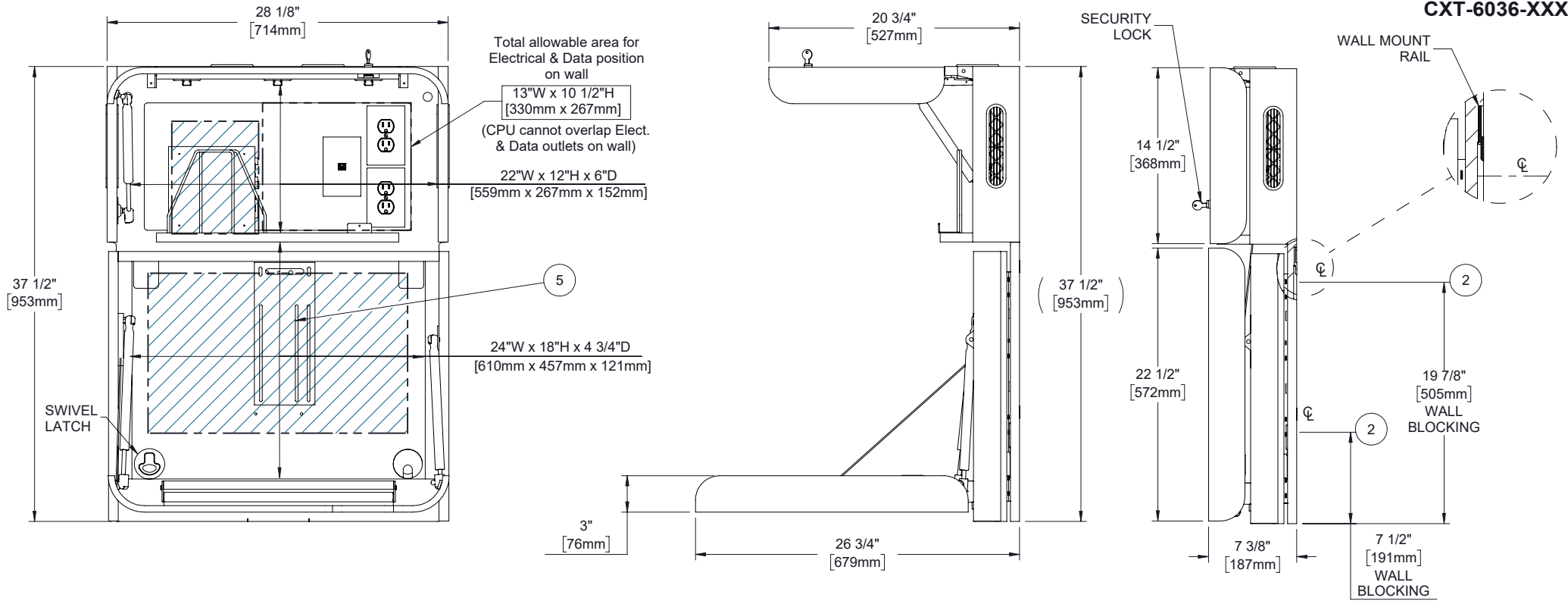
*ASSUMES VESA HOLE PATTERN IS CENTERED ON MONITOR

EQUIPMENT	MAX SIZE DIMENSIONS
CPU	15"W x 12"H x 4"D
*MONITOR	23"W x 13 1/2"H x 2 3/4"D
KEYBOARD/MOUSE AREA	22"W x 20"D

ALL DIMENSIONS ARE IN INCHES
UNLESS NOTED OTHERWISE.
DESIGN SUBJECT TO CHANGE
WITH EQUIPMENT SPECIFICATIONS.
ALL INFORMATION ON THIS
DRAWING IS PROPRIETARY AND
MAY NOT BE USED WITHOUT
PERMISSION FROM PROXIMITY
SYSTEMS, INC. © 2020.

OPTIONAL ACCESSORIES/PART NO. (NOT INCLUDED)

1. SLOPED CABINET TOP: AC-CTOP-7-XXXX
2. UVC SURFACE MOUNT: UVC-SM-NA
3. N/A



COMPONENTS INCLUDED	
ITEM NO.	COMPONENTS
1	MOUSE CATCHER
2	WALL MOUNT RAIL SYSTEM
3	KEYBOARD TRAY
4	N/A
5	MONITOR BRACKET MOUNT
R: A	SHEET 2 OF 2

CXT283807B2NNRNNND

PROXIMITY

WWW.PROXIMITYSYSTEMS.COM

TEL: 800-437-8111

ALL DIMENSIONS ARE IN INCHES
UNLESS NOTED OTHERWISE.
DESIGN SUBJECT TO CHANGE
WITH EQUIPMENT SPECIFICATIONS.
ALL INFORMATION ON THIS
DRAWING IS PROPRIETARY AND
MAY NOT BE USED WITHOUT
PERMISSION FROM PROXIMITY
SYSTEMS, INC. © 2020.